

Paolo Pizzetti

PRIMAVERA DELL'ANIMA

per orchestra

PARTITURA

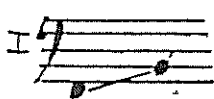
RICORDI

O R G A N I C O

=====


- 2 flauti, 1 flauto in sol
- 2 oboi, 1 corno inglese
- 1 clarinetto in sib, 1 clarinetto in la, 1 clarinetto basso
- 2 fagotti, 1 controfagotto

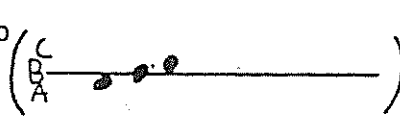
- 4 corni ( in fa )
- 2 trombe in sib
- 2 tromboni, 1 basso tuba (tuba contrabbassa in fa - sib)

- 2 timpani: I  II 


- Percussioni (tre esecutori):

- piatto cinese
- tam. tam.
- gran cassa

- chimes: E) Wood chimes (  )  
a) glass chimes

- piatti sospesi: c) piccolo (  )  
b) medio  
a) grande

- lastra d'acciaio (grande)

- vibrafono
- campane tubolari: (  )
- glockenspiel

- li arpa
- celesta ( 5 ottave )

- archi:

violini 1 ( 4 violini )

2 "

3 "

4 "

5 "

6 "

violenze 1 ( 4 viole, eventualmente 3 )

2 "

3 "

violoncelli 1 ( 4 violoncelli )

2 ( 4 violoncelli )

contrabbassi 1 ( 3 contrabbassi )

2 ( 3 contrabbassi )

SEGNI E AVVERTIMENTI

LEGNI

FLAUTI



= bicordo di armonici naturali ottenuto variando la posizione dell'imboccatura. La nota romboidale indica il suono fondamentale. La diteggiatura è quella tradizionale.



= veloce salita ( o discesa ) di un tremolo tra bicordi di armonici naturali ottenuti da due diverse fondamentali che tremolano. Il valore ritmico su cui la figura è costruita indica la durata dell'evento.

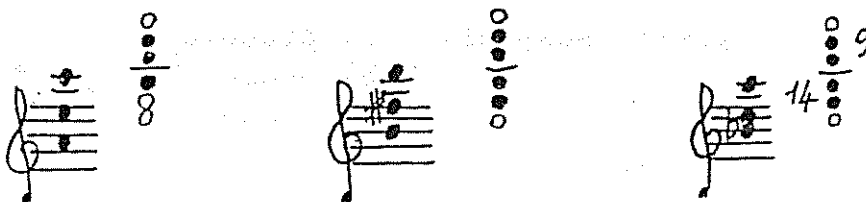
N.B. spesso compare in partitura questa notazione semplificata ma avente esattamente lo stesso significato:



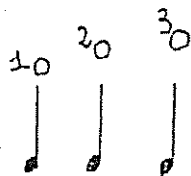
= trillo sulla stessa nota ottenuto con armonici uguali di fondamentali diverse. Le fondamentali sono quelle indicate con nota romboidale.

OBOI E CORNO INGLESE

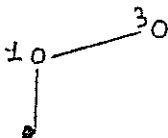
suoni multipli:



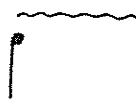
CLARINETTI E CLARINETTO BASSO



= sovrapposizione di armonici bassi (1), medi (2), acuti (3), costruiti sulla fondamentale indicata ed ottenuti variando la posizione dell'imboccatura. La diteggiatura è quella tradizionale.



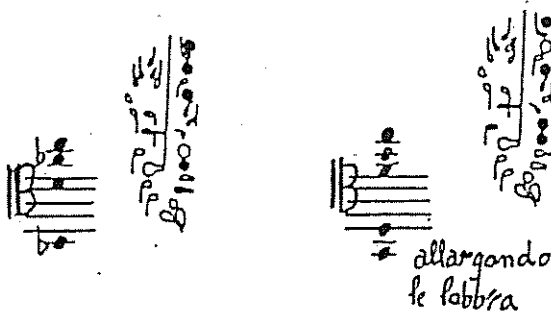
= passaggio "glissato" da una sovrapposizione di armonici ad un'altra. (vedi nota precedente)



= trillo sulla stessa nota. Trillare con una chiave pedale

FAGOTTO

suoni multipli:



= trillo sulla stessa nota. Per le note utilizzate in questa composizione ( da La 1 a Re 3 ) trillare con la chiave n° 9.

O T T O N I

= trillo sulla stessa nota. Ecco la diteggiatura per ottenere il trillo con i suoni utilizzati in questa composizione:

corni:

0 = (I<sup>a</sup> Posiz.)  
 tr Pistone  
 tr 1/1-3  
 tr 0/3  
 1-3 (VI Pos.)  
 tr Pist.  
 3 (IV Pos.)  
 tr Pist.  
 1 (III Pos.)  
 tr Pist.

2 (II pos.)  
 tr Pist.  
 0 (I pos.)  
 tr Pist.  
 1-2-3 (VII Pos.)  
 tr Pist.  
 1-3 (VI Pos.)  
 tr Pist.  
 2-3 (V Pos.)  
 tr Pist.  
 3 (IV Pos.)  
 tr Pist.  
 1 (III Pos.)  
 tr Pist.  
 0 (I Pos.)  
 tr Pist.

trombe in sib:

tr 1/1-3  
 tr 2/1-2-3  
 tr 0/1-2  
 tr 2-3/1-2-3  
 tr 2/1-2  
 tr 2-3/1-2-3  
 tr 2/1-2

tr 0/1  
 tr 2/1-2  
 tr 0/1  
 tr 2/2-3  
 tr 0/2

tromboni:

VII Pos, tr F  
 VI Pos, tr F  
 V Pos, tr F  
 IV Pos, tr F  
 III Pos, tr F  
 II Pos, tr F  
 I Pos, tr F  
 III Pos, tr F  
 IV Pos, tr F

= glissato della serie di armonici (di una posizione)

= glissato della doppia serie di armonici prodotti trillando tra due posizioni. Ecco le posizioni per i glissati utilizzati in questa composizione. Tra parentesi sono indicate le note "attraversate" dal glissato:

corni:

tr 0/3  
 tr 2/2-3  
 tr 0/1

trombe in sib

tr 0/2-3  
 tr 1/1-3

( O T T O N I )

SORDINE:

trombe in sib: sordina wa-wa

tromboni: sordina Bucket (velvet)  
sordina Cup

o = aperto    + = chiuso    —————> = graduale passaggio da aperto a chiuso ( e viceversa)

NOTA BENE:

Gli ottoni non sono scritti in note reali, come, del resto, tutta la partitura.  
In particolare si ricorda che:

- 1) Il suono risultante dei corni in fa si trova sempre una quinta sotto la nota scritta ( anche quando la notazione è in chiave di basso)
- 2) I risultati calanti o crescenti <sup>dovuti</sup> a diversi gradi di apertura e chiusura (o oppure +); non vanno in alcun modo corretti dall'esecutore ( ad esempio leggendo un semitono sopra o sotto la nota scritta). Le diteggiature indicate per i trilli sulla stessa nota e per i glissati "doppi" si riferiscono infatti alla nota scritta, la quale quindi non può essere sostituita da altre per "migliorare" il risultato.  
L'autore desidera appunto non modificare le naturali oscillazioni d'altezza dovute agli effetti di "aperto" e "chiuso".

( P E R C U S S I O N I )

Tam tam

= glissato con la bacchetta di triangolo

Lastra d'acciaio

Lo strumento va piegato in su da posizione (1) a posizione (2) (poco piegato), a posizione (3) (molto piegato) secondo le indicazioni.

bacchette

morbide, medie, dure

vibrafono

motore spento

( A R P A )

= tremolo eolico; mani alternate: nocchie, unghie, nocchie ecc.

= glissato del tremolo eolico: (vedi)



Paolo Peverzani

# PRIMAVERA DELL'ANIMA

per orchestra

a Salvatore Sciarrino

*Lento* (♩ = 50)

2 fl. in Sol  
2 ob. in G  
cl. in sib  
cl. in la  
cl. basso  
Fg.  
c. fg.  
4 Gr. in G  
2 Tr. in sib  
2 Tr. in B  
Tuba  
T.P.  
cel.  
T.T.  
G.C.  
P.S.  
vib.  
Ape.  
Yl.  
Ylc.  
Yc.  
Cb.

*spedire via - via*

*(h. morbide)*

*(h. morbide)*

*(h. morbide)*

*miy FA# Solq LAB  
sib doh asb*

*(h. morbide)*

*(deciso)*

2 fl. in Sol  
2 ob. in G  
sib  
cl. in la  
c. B.  
Fg.  
c. F.  
Gr.  
Tr.  
Trini  
B.T.  
T.P.  
cd.  
T.T.  
S.C.  
P.S.  
vib.  
Ape.  
Yl.  
Ylc.  
Yc.  
Cb.

*(deciso)*

*(deciso)*

FL

Sol

Ob

C.i.

Sib

CL La

C.B.

Fg

C.F.

G

Tr

Tru

B.T.

T.P.

(deciso)

Cd

T.T.

G.C.

P.S.

Vib

Arpa

VL

(deciso)

VLc

Vc

cb

FL

Sol

Ob

C.i.

Sib

CL La

C.B.

Fg

C.F.

G

(lontano)

Tr

Tru

B.T.

TP

Cd

TI

G.C.

PI. A

(l. wood)

Vib

Arpa

VL

VLc

Vc

cb

----- **Tempo I** -----

FL  
 SA  
 OB  
 Cl.  
 Sib  
 Cl.  
 C.B.  
 Fg  
 C.F.  
 G.  
 Tr.  
 Tui  
 B.T.  
 T.P.  
 Cd  
 T.T.  
 G.C.  
 P.S.  
 Vib.  
 A.P.  
 Vl.  
 Vc.  
 Vc.  
 Cb.

(deciso)

Poco string - - - - - Tempo I

FL  
 SA  
 OB  
 Cl.  
 Sib  
 Cl.  
 C.B.  
 Fg  
 C.F.  
 G.  
 Tr.  
 Tui  
 B.T.  
 T.P.  
 Cd  
 T.T.  
 G.C.  
 P.S.  
 Vib.  
 A.P.  
 Vl.  
 Vc.  
 Vc.  
 Cb.

(deciso)



20

Fl  
Ob  
Cl  
Cb  
Fg  
C.F.  
G  
F  
Tm  
B.T.  
TP

(deciso)

cel  
vib  
Yl  
Vlc  
Vc  
Cb

(deciso) (accumulando Tensione) accel.

Fl  
Ob  
Cl  
Cb  
Fg  
C.F.  
G  
F  
Tm  
B.T.  
TP

cel  
vib  
Yl  
Vlc  
Vc  
Cb



cedendo - - - - -

Musical score for page 15, measures 1-30. The score includes parts for Flute (Fl), Saxophone (Sax), Oboe (ob), Clarinet in B-flat (c.b.), Clarinet in C (c.i.), Bassoon (Cb), Trumpet (Tr), Trombone (Tb), Percussion (P), Violin (VL), Viola (Vlc), and Cello (Cb). The music is marked 'cedendo' and features various dynamics and articulations.

Tempo I

Musical score for page 16, measures 31-60. The score includes parts for Flute (Fl), Saxophone (Sax), Oboe (ob), Clarinet in B-flat (c.b.), Clarinet in C (c.i.), Bassoon (Cb), Trumpet (Tr), Trombone (Tb), Percussion (P), Violin (VL), Viola (Vlc), and Cello (Cb). The music is marked 'Tempo I' and features various dynamics and articulations.

Fl  
 oboe  
 Cl. i.  
 Cl. B.  
 Fg  
 C.F.  
 Tr  
 Trm  
 B.T.  
 TP  
 Cd  
 T.T.  
 G.C.  
 P.S.  
 Vib  
 Arpa  
 VL  
 Vc  
 Yc  
 Cb

(deciso)

Fl  
 oboe  
 Cl. i.  
 Cl. B.  
 Fg  
 C.F.  
 Tr  
 Trm  
 B.T.  
 TP  
 Cd  
 T.T.  
 G.C.  
 P.S.  
 Vib  
 Arpa  
 VL  
 Vc  
 Yc  
 Cb

95

Pace string - - - Tempo I

Musical score for page 10, measures 1-10. The score includes staves for Flute (Fl), Flute in C (Sfl), Oboe (Ob), Clarinet (Cl), Clarinet in B-flat (Sib), Clarinet in A (Cl La), Bassoon (C.B.), Flute in G (Fg), Clarinet in F (C.F.), Cor Anglais (Cr), Trumpet (Tr), Trombone (Trm), Baritone (BT), Bass (FT), Cymbal (Cd), Percussion (P.C.), Vibraphone (Vib), Piano (Ppa), Violin (Vl), Viola (Vc), and Cello (Cb). The score features dynamic markings such as *p* and *deciso*. A vertical dashed line is present at measure 5.

Musical score for page 11, measures 1-10. The score includes staves for Flute (Fl), Oboe (Ob), Clarinet (Cl), Clarinet in B-flat (Sib), Clarinet in A (Cl La), Bassoon (C.B.), Flute in G (Fg), Clarinet in F (C.F.), Cor Anglais (Cr), Trumpet (Tr), Trombone (Trm), Baritone (BT), Bass (FT), Cymbal (Cd), Percussion (P.C.), Vibraphone (Vib), Piano (Ppa), Violin (Vl), Viola (Vc), and Cello (Cb). The score features dynamic markings such as *p* and *(0)*. A vertical dashed line is present at measure 5.

40

Fl  
Ob  
Cl Bb  
Cl A  
Fg  
C.B.  
Tr  
Tbn  
P  
C  
B  
Vlc  
Vla  
Vcl  
Kb

string. -

Fl  
Ob  
Cl Bb  
Cl A  
Fg  
C.B.  
Tr  
Tbn  
P  
C  
B  
Vlc  
Vla  
Vcl  
Kb

subito Tempo I

45

Fl

ob

cl

sib

CL

C.B

Fg

C.F

G

Tr

Bni

B.T

TP

cel

T.T.

B.C

PSA

vib

Org

VL

Vlc

Vc

Fb

di nuovo string.

Fl

Sac

ob

cl

sib

CL

C.B

Fg

C.F

G

Tr

Bni

B.T

TP

cel

T.T.

B.C

PSB

vib

Org

VL

Vlc

Vc

cb

----- subito Tempo I (subito deciso)

Fl  
Ob  
Cl.  
sib  
Cl. La  
C.B.  
Fg  
C.F.  
G.  
Tr  
Trai  
BT  
TP  
Cd  
T.T.  
G.C.  
Ps. B.  
vib  
Apx  
VL  
Vlc  
Vc  
Cb

subito Tempo I (subito deciso)

- 25 -

accel.

Fl  
sax  
Ob  
C.i.  
sib  
Cl. La  
C.B.  
Fg  
C.F.  
G.  
Tr  
Trai  
BT  
TP  
Cd  
T.T.  
G.C.  
Ps. B.  
vib  
Apx  
VL  
Vlc  
Vc  
Cb

accel.

sordina Buxket...  
sordina Buxket...

- 26 -



*accel*

Fl  
Su  
ob  
C.i.  
sb  
Cl.  
C.B.  
Fg  
C.F.  
G.  
Tr  
Tbn  
B.T.  
TP  
Cl.  
T.T.  
G.C.  
P.S.  
vib  
Ape  
VL  
Vlc  
Vc  
Cb

*usc*

-29-

*Animato (c.a 60)*

Fl  
Su  
ob  
C.i.  
sb  
Cl.  
C.B.  
Fg  
C.F.  
G.  
Tr  
Tbn  
B.T.  
TP  
Cl.  
T.T.  
G.C.  
P.S.  
vib  
Ape  
VL  
Vlc  
Vc  
Cb

*(deciso!)*

*(b. dinac)*  
*(b. modic)*

*usc*

-30-



Handwritten musical score for page 33. The score is arranged in systems, with each system containing multiple staves for different instruments. The instruments listed on the left side of the page include: Fl (Flute), Soc (Soprano Clarinet), Ob (Oboe), Cl (Clarinet), Sib (Soprano Clarinet), CL (Clarinet), C.B. (Bassoon), Fg (Fagot), C.F. (Fagot), Oz (Oz), TR (Trumpet), Tromboni (Trombone), B.T. (Trombone), TP (Trumpet), Cd (Corno), T.T. (Trombone), C.C. (Corno), P.S. (Percussion), L. (Lira), vib (Vibrola), Ape (Ape), VL (Violin), VLc (Violoncello), VC (Violoncello), and CB (Corno). The notation includes various musical symbols such as notes, rests, dynamics, and articulation marks. There are some handwritten annotations and corrections throughout the score.

Handwritten musical score for page 34. This page continues the orchestral arrangement from page 33. The instruments listed on the left side include: Fl (Flute), Soc (Soprano Clarinet), Ob (Oboe), Cl (Clarinet), Sib (Soprano Clarinet), CL (Clarinet), C.B. (Bassoon), Fg (Fagot), C.F. (Fagot), Oz (Oz), TR (Trumpet), Trombi (Trombone), BT (Trombone), Cd (Corno), T.T. (Trombone), C.C. (Corno), P.S. (Percussion), L. (Lira), Ape (Ape), VL (Violin), VLc (Violoncello), VC (Violoncello), and CB (Corno). The notation is dense with musical symbols, including notes, rests, dynamics, and articulation marks. There are some handwritten annotations and corrections throughout the score.

Fl  
 Ob  
 Cl  
 Sib  
 Cl<sup>Alto</sup>  
 C.B.  
 Fg  
 C.F.  
 G  
 Tr  
 Tuba  
 B.T.  
 TP  
 Cel.  
 T.T.  
 G.C.  
 P.S.  
 L.  
 Trp.  
 Vl.  
 Vcl.  
 Vc.  
 Cb.

Musical score for page 35, featuring woodwinds, brass, strings, and piano. The score includes parts for Flute, Oboe, Clarinet, Bassoon, Trumpet, Trombone, Percussion, and String quartet. The piano part is highly detailed with many ornaments and dynamic markings.

Fl  
 Ob  
 Cl  
 Sib  
 Cl<sup>Alto</sup>  
 B.  
 Fg  
 C.F.  
 C.A.  
 Tr  
 Tuba  
 B.T.  
 TP  
 Cel.  
 T.T.  
 G.C.  
 P.S.  
 L.  
 Trp.  
 Vl.  
 Vcl.  
 Vc.  
 Cb.

Musical score for page 36, featuring woodwinds, brass, strings, and piano. The score includes parts for Flute, Oboe, Clarinet, Bassoon, Trumpet, Trombone, Percussion, and String quartet. The piano part continues with detailed notation and dynamic markings.

*molto* *(furioso [c.a. 84])* *subito Calmo (c.a. 89)*

Fl  
Ob  
Cl.  
Cb  
Tr  
Tromb.  
TP  
CEL  
T.T.  
G.C.  
P.C.  
L.  
Vib.  
Apo  
VL  
Vlc  
Vc  
Cb

*molto cedendo* *(lontano, ma intimamente espressivo)*

Fl  
Ob  
Cl.  
Cb  
Tr  
Tromb.  
TP  
CEL  
T.T.  
G.C.  
P.C.  
L.  
Vib.  
Apo  
VL  
Vlc  
Vc  
Cb

*(leggero!)*

*(lontano)*

subito furioso subito calmo deciso e veloce subito scorrevole (c. a. 55)

Handwritten musical score for page 20. The score is divided into four sections by vertical dashed lines, corresponding to the performance directions: "subito furioso", "subito calmo", "deciso e veloce", and "subito scorrevole (c. a. 55)". The instruments listed on the left include: Fl. (Flute), Sc. (Saxophone), Ob. (Oboe), C. i. (Clarinet in E-flat), sib. (Bassoon), Cl. B. (Clarinet in B-flat), Fg. (Fagotto), C. B. (Corno in B-flat), Tr. (Tromba), T. i. (Trombone), B. T. (Baritone), T. P. (Tromba Piccola), Cd. (Corno in D), T. T. (Tromba Terza), G. C. (Corno in G), P. S. (Percussion), L. (Lunedia), vib. (Vibrafono), A. p. (Arpa), VL (Violini), V. c. (Violoncelli), V. c. (Violoncelli), and Cb. (Contrabbassi). The score contains complex rhythmic patterns, including triplets and sixteenth notes, and dynamic markings such as *ff*, *mp*, and *p*. There are also performance instructions like "rit." and "cresc.".

Handwritten musical score for page 40. The instruments listed on the left include: Fl. (Flute), Sc. (Saxophone), Ob. (Oboe), C. i. (Clarinet in E-flat), sib. (Bassoon), Cl. B. (Clarinet in B-flat), Fg. (Fagotto), C. F. (Corno in F), G. (Corno in G), Tr. (Tromba), T. i. (Trombone), B. T. (Baritone), T. P. (Tromba Piccola), Cd. (Corno in D), T. T. (Tromba Terza), G. C. (Corno in G), P. S. (Percussion), L. (Lunedia), vib. (Vibrafono), A. p. (Arpa), VL (Violini), V. c. (Violoncelli), V. c. (Violoncelli), and Cb. (Contrabbassi). The score contains complex rhythmic patterns, including triplets and sixteenth notes, and dynamic markings such as *p* and *mp*. There are also performance instructions like "rit." and "cresc.".

80

Fl  
Ob  
Cl.b  
Fg  
Tr  
Tbn  
Cd  
P  
Vl  
Vc

Fl  
Ob  
Cl.b  
Fg  
Tr  
Tbn  
Cd  
P  
Vl  
Vc





*molto cedendo* - - - - - (subito violento) riprende  
*Scorrevole*

(come la prima volta)

FL  
Sax  
Ob  
Cl.  
Sib  
Cl.  
C.B.  
Fg  
C.F.  
Gr  
Tr  
Trom  
B.T.  
TP  
Cel  
T.T.  
G.C.  
P.S.  
L.  
rib  
Arya  
VL  
Vlc  
Vc  
Cb

FL  
Sax  
Ob  
Cl.  
Sib  
Cl.  
C.B.  
Fg  
C.F.  
Gr  
Tr  
Trom  
B.T.  
TP  
Cel  
T.T.  
G.C.  
P.S.  
L.  
rib  
Arya  
VL  
Vlc  
Vc  
Cb

(deciso!)

Musical score for page 49, featuring various instruments including Flute (Fl.), Oboe (Ob.), Clarinet (Cl.), Bassoon (C.B.), Trumpet (Tr.), Trombone (Trom.), Cello (C.), and Double Bass (Cb.). The score includes complex rhythmic patterns, dynamic markings such as *mf*, *f*, and *p*, and performance instructions like *deciso!*. The woodwinds and strings are heavily involved in the texture, with many notes and rests.

Poco più lento (70 c.a.)

Musical score for page 50, featuring various instruments including Flute (Fl.), Oboe (Ob.), Clarinet (Cl.), Bassoon (C.B.), Trumpet (Tr.), Trombone (Trom.), Cello (C.), and Double Bass (Cb.). The score includes complex rhythmic patterns, dynamic markings such as *mf*, *f*, and *p*, and performance instructions like *Poco più lento (70 c.a.)*. The woodwinds and strings are heavily involved in the texture, with many notes and rests.

FL  
SCL

Ob  
Cl

sib  
Cl

Cl  
C.B.

Fg  
C.F.

G

Tp

Trui  
B.T.

TP

Cd.

TT  
G.C.  
P.S.  
L

vib  
(pp)...

Arpa  
(molto espressivo)

VL

Vlc  
1  
2  
3

Vc  
1  
2

Cb

Fl  
SCL

Ob  
Cl

sib  
Cl

Cl  
C.B.

Fg  
C.F.

G

Tp

Trui  
B.T.

TP

Cd.

TT  
G.C.  
P.S.  
L

vib  
(cresc.)

Arpa

VL

Vlc  
1  
2  
3

Vc  
1  
2

Cb

furioso (c.a. 84)

FL

Sr

Ob

C.I.

Sib

C.La

C.B.

Fg

C.F.

Gr

Tr

T.Mi

B.T.

TP

Cel

T.T.

G.C.

P.S.

L.

vib

Arpa

VL

Vlc

Vc

cb

Fl

Sr

Ob

Sib

C.La

C.B.

Fg

C.F.

Gr

Tr

T.Mi

B.T.

TP

Cel

T.T.

G.C.

P.S.

L

vib

Arpa

VL

Vlc

Vc

cb

(con forza)

ritorna scorrevole (74.c.d)

Fl

Sax

Ob

Cori

Sib

Cl

C.B.

Fg

C.F.

G

Tr

Tru

B.T.

TP

Cd

T.T.

G.C.

P.S.

L.

Vib

Arpa

Vl

Vcl

Vc

Cb

*p*

*mf*

*cresc.*

*ritorna scorrevole*

110

Fl

Sax

Ob

Cori

Sib

Cl

C.B.

Fg

C.F.

G

Tr

Tru

B.T.

TP

Cd

T.T.

G.C.

P.S.

L.

Vib

Arpa

Vl

Vcl

Vc

Cb

*p*

*mf*

*cresc.*

*ritorna scorrevole*

string. - - - - - molto

(furioso)

435 Poco allargando

FL.

Sac.

Ob.

Ci.

Sib.

Cl. La

C. B.

Fg.

C. F.

G.

Tr.

Trm.

B.T.

T.P.

Cel.

T.T.

G.C.

P.S.

L.

Vib.

App.

VL

Vlc.

Vcl.

cb.

FL.

Sac.

Ob.

Ci.

Sib.

Cl. La

C. B.

Fg.

C. F.

G.

Tr.

Trm.

B.T.

T.P.

Cel.

T.T.

G.C.

P.S.

L.

Vib.

App.

VL

Vlc.

Vcl.

cb.

(quasi maestoso)

subito a Tempo

Musical score for page 30, featuring various instruments including Flute (Fl), Oboe (Ob), Clarinet (Cl), Bassoon (Cb), Trumpet (Tr), Trombone (Tb), Tuba (T), Percussion (P), and Violins (Vl). The score includes complex rhythmic patterns, dynamic markings such as *mf*, *f*, and *mezzo molto*, and performance instructions like *quasi maestoso*. The notation is dense with many notes and rests across multiple staves.

Musical score for page 60, continuing the orchestral arrangement with instruments like Flute (Fl), Oboe (Ob), Clarinet (Cl), Bassoon (Cb), Trumpet (Tr), Trombone (Tb), Tuba (T), Percussion (P), and Violins (Vl). The score includes complex rhythmic patterns, dynamic markings such as *mf*, *f*, and *mezzo molto*, and performance instructions like *subito a Tempo*. The notation is dense with many notes and rests across multiple staves.

acc. - - - - - molto

Fl.  
Ob.  
Cl. B.  
Fg.  
C.B.  
C.  
Tr.  
Tru.  
B.T.  
T.T.  
Cd.  
P.C.  
G.C.  
P.S.  
L.  
vib.  
App.  
VL  
Vc  
Cb

120

121

122

123

124

125

126

127

128

129

130

131

132

133

134

135

136

137

138

139

140

141

142

143

144

145

146

147

148

149

150

151

152

153

154

155

156

157

158

159

160

161

162

163

164

165

166

167

168

169

170

171

172

173

174

175

176

177

178

179

180

181

182

183

184

185

186

187

188

189

190

191

192

193

194

195

196

197

198

199

200

201

202

203

204

205

206

207

208

209

210

211

212

213

214

215

216

217

218

219

220

221

222

223

224

225

226

227

228

229

230

231

232

233

234

235

236

237

238

239

240

241

242

243

244

245

246

247

248

249

250

251

252

253

254

255

256

257

258

259

260

261

262

263

264

265

266

267

268

269

270

271

272

273

274

275

276

277

278

279

280

281

282

283

284

285

286

287

288

289

290

291

292

293

294

295

296

297

298

299

300

301

302

303

304

305

306

307

308

309

310

311

312

313

314

315

316

317

318

319

320

321

322

323

324

325

326

327

328

329

330

331

332

333

334

335

336

337

338

339

340

341

342

343

344

345

346

347

348

349

350

351

352

353

354

355

356

357

358

359

360

361

362

363

364

365

366

367

368

369

370

371

372

373

374

375

376

377

378

379

380

381

382

383

384

385

386

387

388

389

390

391

392

393

394

395

396

397

398

399

400

401

402

403

404

405

406

407

408

409

410

411

412

413

414

415

416

417

418

419

420

421

422

423

424

425

426

427

428

429

430

431

432

433

434

435

436

437

438

439

440

441

442

443

444

445

446

447

448

449

450

451

452

453

454

455

456

457

458

459

460

461

462

463

464

465

466

467

468

469

470

471

472

473

474

475

476

477

478

479

480

481

482

483

484

485

486

487

488

489

490

491

492

493

494

495

496

497

498

499

500

501

502

503

504

505

506

507

508

509

510

511

512

513

514

515

516

517

518

519

520

521

522

523

524

525

526

527

528

529

530

531

532

533

534

535

536

537

538

539

540

541

542

543

544

545

546

547

548

549

550

551

552

553

554

555

556

557

558

559

560

561

562

563

564

565

566

567

568

569

570

571

572

573

574

575

576

577

578

579

580

581

582

583

584

585

586

587

588

589

590

591

592

593

594

595

596

597

598

599

600

601

602

603

604

605

606

607

608

609

610

611

612

613

614

615

616

617

618

619

620

621

622

623

624

625

626

627

628

629

630

631

632

633

634

635

636

637

638

639

640

641

642

643

644

645

646

647

648

649

650

651

652

653

654

655

656

657

658

659

660

661

662

663

664

665

666

667

668

669

670

671

672

673

674

675

676

677

678

679

680

681

682

683

684

685

686

687

688

689

690

691

692

693

694

695

696

697

698

699

700

701

702

703

704

705

706

707

708

709

710

711

712

713

714

715

716

717

718

719

720

721

722

723

724

725

726

727

728

729

730

731

732

733

734

735

736

737

738

739

740

741

742

743

744

745

746

747

748

749

750

751

752

753

754

755

756

757

758

759

760

761

762

763

764

765

766

767

768

769

770

771

772

773

774

775

776

777

778

779

780

781

782

783

784

785

786

787

788

789

790

791

792

793

794

795

796

797

798

799

800

801

802

803

804

805

806

807

808

809

810

811

812

813

814

815

816

817

818

819

820

821

822

823

824

825

826

827

828

829

830

831

832

833

834

835

836

837

838

839

840

841

842

843

844

845

846

847

848

849

850

851

852

853

854

855

856

857

858

859

860

861

862

863

864

865

866

867

868

869

870

871

872

873

874

875

876

877

878

879

880

881

882

883

884

885

886

887

888

889

890

891

892

893

894

895

896

897

898

899

900

901

902

903

904

905

906

907

908

909

910

911

912

913

914

915

916

917

918

919

920

921

922

923

924

925

926

927

928

929

930

931

932

933

934

935

936

937

938

939

940

941

942

943

944

945

946

947

948

949

950

951

952

953

954

955

956

957

958

959

960

961

962

963

964

965

966

967

968

969

970

971

972

973

974

975

976

977

978

979

980

981

982

983

984

985

986

987

988

989

990

991

992

993

994

995

996

997

998

999

1000

1001

1002

1003

1004

1005

1006

1007

1008

1009

1010

1011

1012

1013

1014

1015

1016

1017

1018

1019

1020

1021

1022

1023

1024

1025

1026

1027

1028

1029

1030

1031

1032

1033

1034

1035

1036

1037

1038

1039

1040

1041

1042

1043

1044

1045

1046

1047

1048

1049

1050

1051

1052

1053

1054

1055

1056

1057

1058

1059

1060

1061

1062

1063

1064

1065

1066

1067

1068

1069

1070

1071

1072

1073

1074

1075

1076

1077

1078

1079

1080

1081

1082

1083

1084

1085

1086

1087

1088

1089

1090

1091

1092

1093

1094

1095

1096

1097

1098

1099

1100

1101

1102

1103

1104

1105

1106

1107

1108

1109

1110

1111

1112

1113

1114

1115

1116

1117

1118

1119

1120

1121

1122

1123

1124

1125

1126

1127

1128

1129

1130

1131

1132

1133

1134

1135

1136

1137

1138

1139

1140

1141

1142

1143

1144

1145

1146

1147

1148

1149

1150

1151

1152

1153

1154

1155

1156

1157

1158

1159

1160

1161

1162

1163

1164

1165

1166

1167

1168

1169

1170

1171

1172

1173

1174

1175

1176

1177

1178

1179

1180

1181

1182

1183

1184

1185

1186

1187

1188

1189

1190

1191

1192

1193

1194

1195

1196

1197

1198

1199

1200

1201

1202

1203

1204

1205

1206

1207

1208

1209

1210

1211

1212

1213

1214

1215

1216

1217

1218

1219

1220

1221

1222

1223

1224

1225

1226

1227

1228

1229

1230

1231

1232

1233

1234

1235

1236

1237

1238

1239

1240

1241

1242

1243

1244

1245

1246

1247

1248

1249

1250

1251

1252

1253

1254

1255

1256

1257

1258

1259

1260

1261

1262

1263

1264

1265

1266

1267

1268

1269

1270

1271

1272

1273

1274

1275

1276

1277

1278

1279

1280

1281

1282

1283

1284

1285

1286

1287

1288

1289

1290

1291

1292

1293

1294

1295

1296

1297

1298

1299

1300

1301

1302

1303

1304

1305

1306

1307

1308

1309

1310

1311

1312

1313

1314

1315

1316

1317

1318

1319

1320

1321

1322

1323

1324

1325

1326

1327

1328

1329

1330

1331

1332

1333

1334

1335

1336

1337

1338

1339

1340

1341

1342

1343

1344

1345

1346

1347

1348

1349

1350

1351

1352

1353

1354

1355

1356

1357

1358

1359

1360

1361

1362

1363

1364

1365

1366

1367

1368

1369

1370

1371

1372

1373

1374

1375

1376

1377

1378

1379

1380

1381

1382

1383

1384

1385

1386

1387

1388

1389

1390

1391

1392

1393

1394

1395

1396

1397

1398

1399

1400

1401

1402

1403

1404

1405

1406

1407

1408

1409

1410

1411

1412

1413

1414

1415

1416

1417

1418

125

Fl

Ob

Cl

Fg

G

Tr

B.T.

TP

Cd

T.T.

CC

P.S.

L.

vib

Arpa

VL

Vlc

Vc

cb

\* prima la posizione sulle 2, 3, 4 corde,  
la seconda ancora muta.

131

Fl

Ob

Cl

Fg

G

Tr

B.T.

TP

Cd

P.C.

T.T.

CHIN

C.C.

P.S.

L.

CAMP

Arpa

VL

Vlc

Vc

cb

Fl  
 Cor  
 Ob  
 Cl.  
 Sib  
 CL La  
 CB  
 Fg  
 CF  
 G  
 Tr  
 Trp  
 B.T.  
 TP  
 Cd  
 T.T.  
 G.C.  
 P.S.  
 L.  
 vib  
 Arpa  
 VL  
 Vle  
 Vc  
 Cb

Musical score for page 65, featuring various instruments including woodwinds (Flute, Clarinet, Saxophone, Oboe, Bassoon, Trumpet, Trombone, Tuba), brass (Cornet, Fuglehorn, Trumpet, Trombone, Tuba), strings (Violin, Viola, Violoncello, Contrabasso), and keyboard instruments (Arpa, Piano). The score includes dynamic markings such as *pp*, *mp*, *f*, and *mf*, and performance instructions like *rit.* and *rit. mos.*.

Fl  
 Cor  
 Ob  
 Cl.  
 Sib  
 CL La  
 CB  
 Fg  
 CF  
 G  
 Tr  
 Trp  
 B.T.  
 TP  
 Cd  
 P.C.  
 T.T.  
 G.C.  
 P.S.  
 L.  
 vib  
 Arpa  
 VL  
 Vle  
 Vc  
 Cb

Musical score for page 66, continuing the orchestral composition. It features the same instrumentation as page 65, including woodwinds, brass, strings, and keyboard instruments. The score includes dynamic markings such as *pp*, *mp*, *f*, and *mf*, and performance instructions like *rit.* and *rit. mos.*.

string. - - - - - subito più ampio (sempre legato)

FL  
Sol  
Ob  
C.i.  
sib  
CL La  
C.B.  
Fg  
C.F.  
Gr  
Fr  
Trio  
B.T.  
TP  
Cd  
T.T.  
G.C.  
P.C.  
L.  
vib  
App  
VL  
Vlc  
Vc  
Cb

(quasi allargando) stringere subito di molto più ampio (sempre legato)

FL  
Sol  
Ob  
C.i.  
sib  
CL La  
C.B.  
Fg  
C.F.  
Gr  
Fr  
Trio  
B.T.  
TP  
Cd  
T.T.  
G.C.  
P.C.  
L.  
CARZ  
App  
VL  
Vlc  
Vc  
Cb

e subito string. - - - molto - - - Pesante, poco sostenuto ma preciso tempo Animato (72 c.a)

(con affanno)

Fl  
Sul  
Ob  
Cl.  
Sib  
Cl.  
Cb  
Fg  
C.F.  
G  
T  
Tnri  
B.T.  
T.P.  
Cd.  
P.C.  
G.C.  
P.S.  
C.  
Cmp  
Arpe  
VL  
Vlc  
Vc  
Cb

*(various musical notations and dynamics)*

Fl  
Sul  
Ob  
Cl.  
Sib  
Cl.  
Cb  
Fg  
C.F.  
G  
T  
Tnri  
B.T.  
T.P.  
Cd.  
Tn  
C.C.  
P.S.  
L.  
Sib  
Arpe  
VL  
Vlc  
Vc  
Cb

*(various musical notations and dynamics)*

140

Fl.  
ob.  
Cl. Bb.  
Cl. C.  
Fg.  
c.b.  
Tr.  
B.T.  
T.P.  
Cyl.  
Sn.  
B.D.  
T.T.

140 141 142 143 144 145 146 147 148 149

Poco cedendo

a Tempo

Fl.  
ob.  
Cl. Bb.  
Cl. C.  
Fg.  
c.b.  
Tr.  
B.T.  
T.P.  
Cyl.  
Sn.  
B.D.  
T.T.

150 151 152 153 154 155 156 157 158 159

Poco cedendo a Tempo

string - - - - - (deciso) subito lento

subito a Tempo

cedendo molto - -

145

Fl  
sa  
Ob  
Cor  
Cl  
Fg  
C.F.  
G  
Tru  
B.T.  
T.P.  
Cel  
T.T.  
G.C.  
P.S.  
L.  
Vib  
A.P.  
V.I.  
V.II  
Vc  
Cb

*(deciso) subito lento*

*T. II staccato (quasi un lamento)*

*staccato*

*P...*

*(P)*

Fl  
sa  
Ob  
Cor  
Cl  
Fg  
C.F.  
G  
Tru  
B.T.  
T.P.  
Cel  
T.T.  
G.C.  
P.S.  
L.  
Vib  
A.P.  
V.I.  
V.II  
Vc  
Cb

*subito a Tempo*

*cedendo molto*

*3. cordona cup*

*(norm) 0*

*staccato*

*P → 0*

*T (v)*

subito a Tempo

string

subito lento

Fl  
Fl  
ob  
Cl  
sib  
Cl La  
C.B.  
Fg  
C.F.  
C.  
Tr  
Pni  
B.T.  
TP  
Cd  
T.T.  
G.C.  
P.S.  
L.  
vib  
Arpa  
VL  
Vc  
Yc  
Cb

subito a Tempo

string

subito lento

150

mf

sema sordina

P...

subito a Tempo

(con il contrabbasso)

Fl  
Fl  
ob  
Cl  
sib  
Cl La  
C.B.  
Fg  
C.F.  
C.  
Tr  
Tru  
B.T.  
TP  
Cd  
T.T.  
G.C.  
P.S.  
L.  
vib  
Arpa  
VL  
Vc  
Yc  
Cb

(con il contrabbasso)

150

mf

deciso! veloce rall.

calmo(48 c.a.)

allargando molto - - - a Tempo (calmo)

subito  
ritardando  
ancora allargando - - - -

Musical score for page 40, featuring woodwinds, brass, and strings. The score includes parts for Flute (Fl.), Oboe (ob), Clarinet in B-flat (Cl. B.), Bassoon (Fg), Trumpet (Tr.), Trombone (Tr.), Tenor Trombone (T.T.), Bass Trombone (B.C.), Percussion (P.S.), Bass Drum (L.), Vibraphone (vib), and Piano (Ppp). The piano part is divided into three staves (1, 2, 3). The score contains various musical notations, including dynamics (mf, f, p), articulation (accents, slurs), and performance instructions such as "col legno", "Haut...", and "ritardando".

molto  
Piu' Presente

Musical score for page 80, featuring woodwinds, brass, and strings. The score includes parts for Flute (Fl.), Oboe (ob), Clarinet in B-flat (Cl. B.), Bassoon (Fg), Trumpet (Tr.), Trombone (Tr.), Tenor Trombone (T.T.), Bass Trombone (B.C.), Percussion (P.S.), Bass Drum (L.), Vibraphone (vib), and Piano (Ppp). The piano part is divided into three staves (1, 2, 3). The score contains various musical notations, including dynamics (mf, f), articulation (accents, slurs), and performance instructions such as "molto" and "Piu' Presente".

460

*(tenuamente)*

FL

SA

OB

CI

SB

CL

CB

Fg

C.F.

G

Tr

Tru

B.T.

TP

Cd

T.T.

G.C.

B.S.

L.

Vib

Aipe

LAH

*(tenuamente)*

*Lr.*

*(deciso)*

P

VZ

VZ

VC

cb

*con intima espressione*

FL

SA

OB

CI

SB

CL

CB

Fg

C.F.

G

Tr

Tru

B.T.

TP

Cd

T.T.

G.C.

B.S.

L.

Vib

Aipe

*(b. mod.)*

*con intima espressione*

P

VZ

VZ

VC

cb

Poco allargando

subito furioso

subito Calmo

165

cedendo ..... a Tempo

Fl

Ob

Sib

CL

C.B.

Fg

G

Tr

Trni

RT

TP

Cd

Tr

G.C.

P.S. (pp)

L.

Vib

Pp

(espressivo)

Vl

Vc

Vc

Cb

(deciso)

P

Fl

Sn

Ob

C.B.

Sib

CL

C.B.

Fg

C.F.

G

F

Trni

RT

Cd

Tr

G.C.

P.S.

L.

Vib

Pp

Vl

Vc

Vc

Cb

(pp)



(Viofento) | subito calmissimo, lontano

Handwritten musical score for page 89, featuring a full orchestral ensemble. The score includes staves for Flute (Fl), Oboe (Ob), Clarinet in B-flat (Cl. B.), Bassoon (Fg), Trumpet (Tr), Trombone (Tbn), Tuba (Tub), Percussion (P), Snare Drum (Cm), Cymbal (Cb), and Violins (Vl). The music is marked with dynamic and performance instructions such as *subito calmissimo, lontano*, *(morendo subito)*, *(h. morbide)*, *ppp...*, *(deciso)*, and *flaut...*. The score is divided into two systems by a vertical dashed line.

Handwritten musical score for page 90, featuring a full orchestral ensemble. The score includes staves for Flute (Fl), Oboe (Ob), Clarinet in B-flat (Cl. B.), Bassoon (Fg), Trumpet (Tr), Trombone (Tbn), Tuba (Tub), Percussion (P), Snare Drum (Cm), Cymbal (Cb), and Violins (Vl). The music is marked with dynamic and performance instructions such as *(espressivo)*. The score is divided into two systems by a vertical dashed line.



cedendo - - - - - deciso

cedendo - - - - - molto

185

Fl  
Ob  
Cl Bb  
Cb  
Tr  
Tb  
P  
Vl  
Vc  
Cb

*ppp*  
*p*  
*mp*

*cedendo* *deciso*

*corno cup*

*FA# sol4 La4*  
*do4 re4*  
*(lento e animato, con espressione)*

*vibrazione (h.mab.)*

*sol4 lab 5* *mi4*

*pp* *p* *mp* *f*

Fl  
Ob  
Cl Bb  
Cb  
Tr  
Tb  
P  
Vl  
Vc  
Cb

*ppp* *p* *mp*

*cedendo* *molto*

*(con eleganza, allargando)*

*(espressivo)*

*(piu presente)*

*allargando, lontano*

*sol4* *mi4*

*pp* *p* *mp* *f*

Reggio Emilia  
dicembre 90